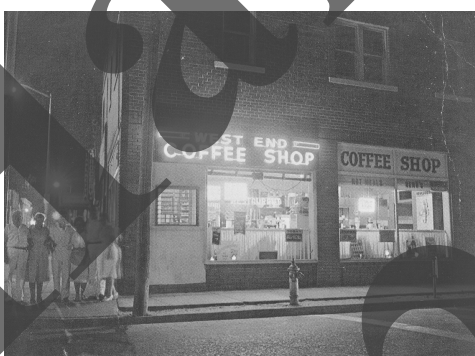




A picture of West Main Street, taken in the 1960's from the corner of Havens Avenue. This section of Main Street experienced the greatest changes in the following two decades. Only the two dark buildings in the center are still standing today.



West Main Street as seen from the corner of West Avenue in 1970. Soon all the buildings, starting from the right up to the white building with the small gable, the former Granada Theater, would fall victim to the wrecking ball. In this cleared space the new 6th District Court building would rise. The building on the right side of the picture housed Kurt's Coffee Shop and Ben Schiffers Used Book Store.



Kurt's West End Coffee Shop on the corner of West Avenue and Main Street.