

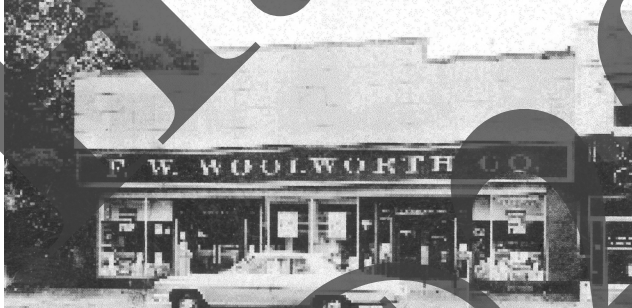


The Bee Hive store stayed in business only till the end of the 1960's, when the Mid Island department store took over the building.



The Burlington Coat Factory became the successor to the Mid Island department store.

Patchogue , New York



The Woolworth Store on East Main Street in 1960. In the following years this became the Patchogue Stationary Store, than the Yesteryears Auction Gallery and now the Dollar Store.



The former Nettie Roe home, two houses east of Rider Avenue, is the last survivor of the homes and mansions built more than one hundred years ago on East Main Street.