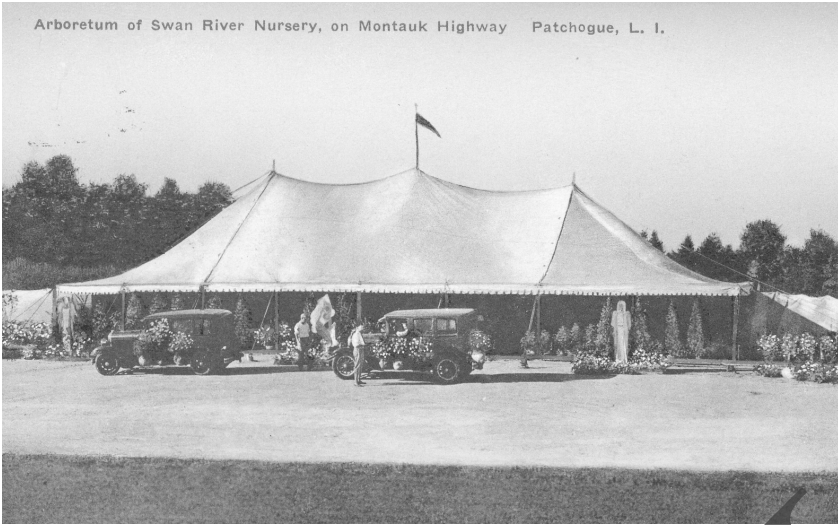


Arboretum of Swan River Nursery, on Montauk Highway Patchogue, L. I.



The Swan River Nursery was a large and well known nursery on Montauk Highway in East Patchogue. This nursery was started in 1893 by Charles W. Avery on the property of the Avery family, which owned this land since 1754. From this park-like nursery, products were shipped to all parts of the island and New York City.



Patchogue Swan River Nursery New York
Everything for the garden can be purchased here.
If you desire landscape assistance, return this card and we will gladly call to make suggestions.

When Montauk Highway was cut through the Avery property, Humphrey R. Avery took this opportunity and built this attractive display building and office on the north side of the highway and a large fountain on the south side to make his business appealing to potential costumers. Today a shopping mall is located on this spot.



Ye Old Homestead Tea Shoppe Prop. Mrs. F. L. Eidet
Phone 872 East Patchogue, L. I.

The quaint little "Ye Olde Homestead Tea Shoppe" stood just east of the Swan River Nursery on South Country Road in the 1930's and 1940's.