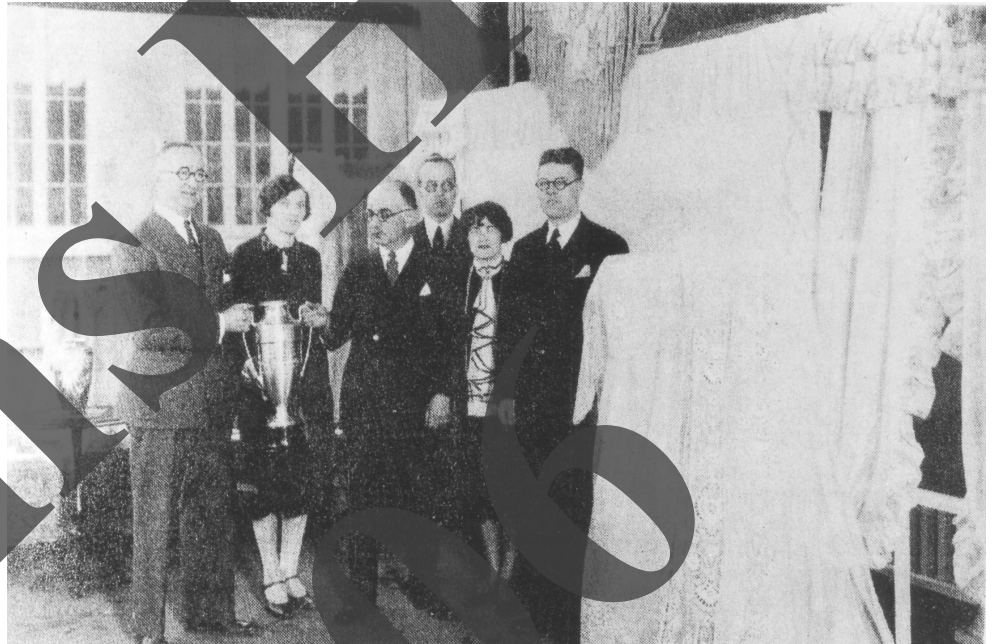


In this 1920's picture a new pattern is inspected in the design department. The men are, from left to right: Frank Guttridge, Fred Varney and Charles N. Butler.



A 1926 picture taken at the Lace Mill. From left to right: John Van Pelt, president of the Chamber of Commerce, Doris S. Osman, Alfred Blum, Ambrose W. Page, secretary of the Chamber of Commerce, Rose Lichenstein, Ernest A. Guttridge.



June 2, 1941 five hundred and fifty mill workers walked out on strike, seeking a pay raise. The strike lasted 18 weeks. Here Mary Warden Blanding, on the right, and Adelaide Gazzola pose with their dog "Skippy". We do not know what the dog was striking for, possibly a larger fire hydrant?