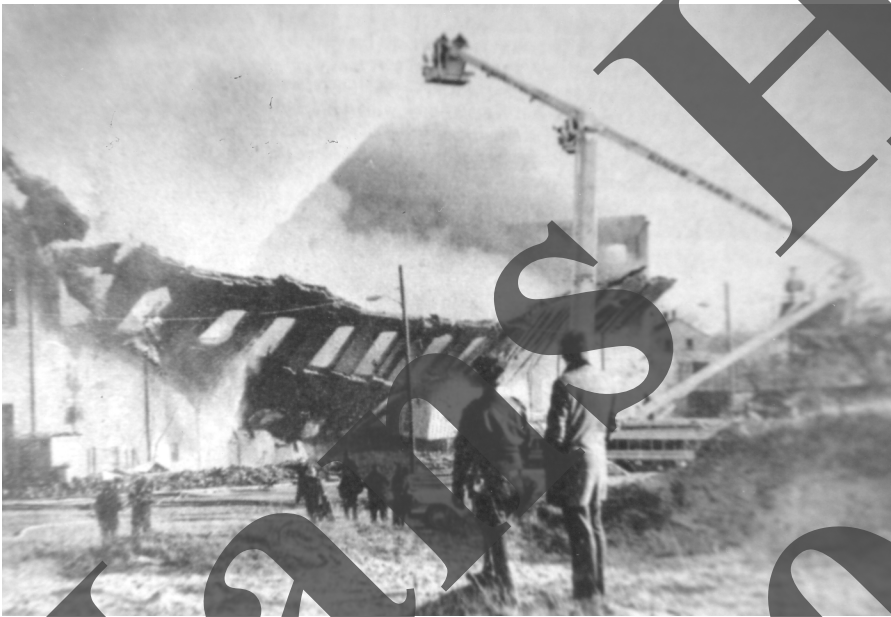




Firemen from 38 fire departments fought this blaze for over 29 hours to get the fire under control. Water from the lake had to be used to supplement the water available from the water system.



The wall collapses. This fire spelled the beginning of the end of the former mill complex. The two large buildings on the west end, which housed most of the rented space in the Island Industrial Park, were totally destroyed.



A July 1989 picture of the old Lace Mill. Vacant, vandalized and with the windows boarded.