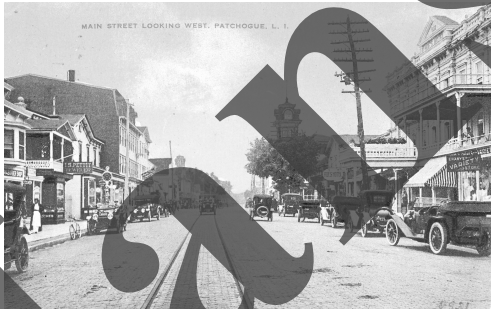


In the early part of the century there was enough curbside parking space on Main Street for the few cars then on the road. As the population grew in the 1920's a new way of parking had to be introduced; the diagonal head-on-to-the-curb parking. This worked well enough until about the 1950's, but then this system had to be abandoned because of the increased traffic, which made backing out of the parking space hazardous. To prevent the business district from losing costumers due to the lack of parking space, a new solution had to be found : off Main Street parking fields. The acquisition of property to the north and south of Main Street was started under the administration of Mayor George Lechtrecker and came into full swing under the administration of Mayor Robert T. Waldbauer in the 1960's. The master plan added hundreds of parking spaces to the downtown shopping area, just in time to enable local merchants to compete with the first malls that started to spring up in the area.

Following are some statistics for Brookhaven Town, for which Patchogue was the main shopping center, and for Suffolk County, to show the tremendous growth in population in this century.

Population of Suffolk County :	1920	110,246	Brookhaven Town :	1920	21,847
	1930	161,055		1930	28,291
	1940	197,355		1940	32,117
	1950	276,129		1950	44,522
	1966	960,000		1960	109,900
	2005	1,480,000		2004	472,425



1910



1925



1947



1950's