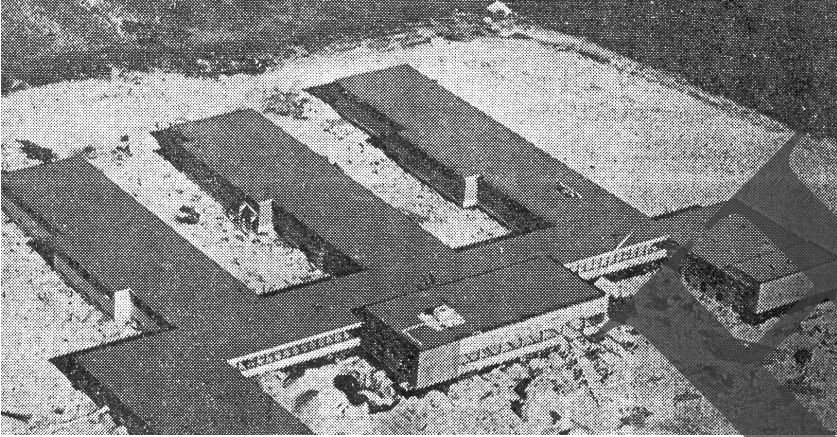


The Brookhaven Memorial Hospital

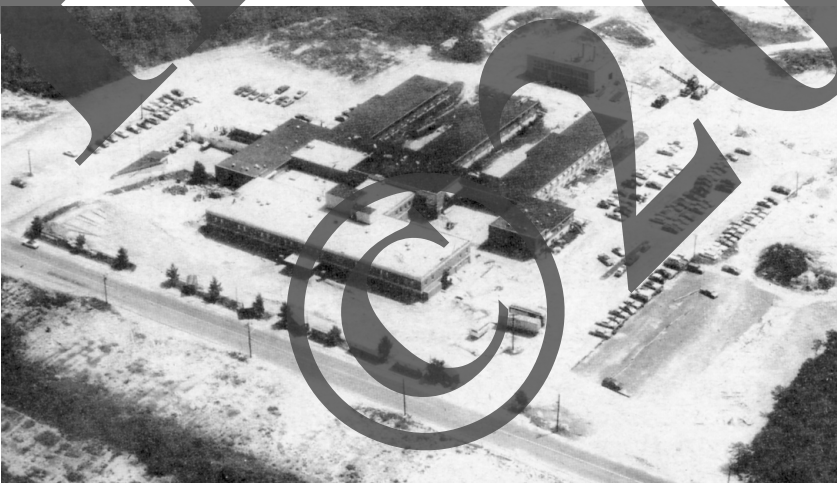
Suffolk County deeded an 18 acre tract in East Patchogue to the Brookhaven Memorial Association July 9, 1952, to be used for the site of a hospital. The corner stone for the Brookhaven Memorial Hospital was laid on November 28, 1954.



An 1955 aerial photo of the nearly completed hospital.



The 96 bed Brookhaven Memorial Hospital, built at a cost of \$ 1,300,000, opened August 1, 1956. Patients prior to 1956 had to travel either to Port Jefferson or Bay Shore for treatments in hospitals.



The hospital, which was already to small when opened in 1956, was enlarged in November 1960 with an addition for 44 beds. The rapid increase in population in the area served by the hospital called for a \$3.9 million expansion, started August 1969 and completed by March 27, 1971. A two story building was added in front of the original building , which increased the capacity of the hospital to 220 beds. A 70 bed surgical pavilion was also added at this time.