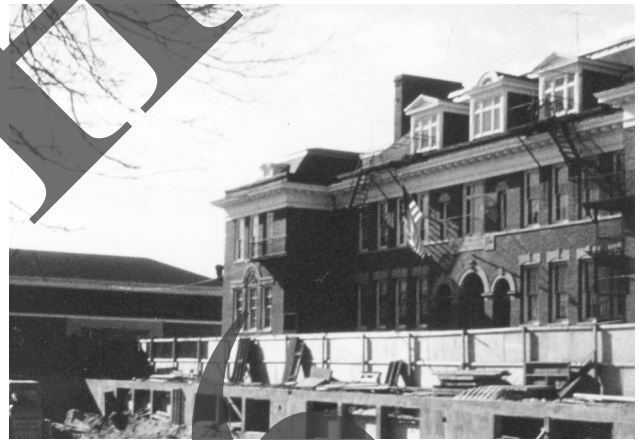




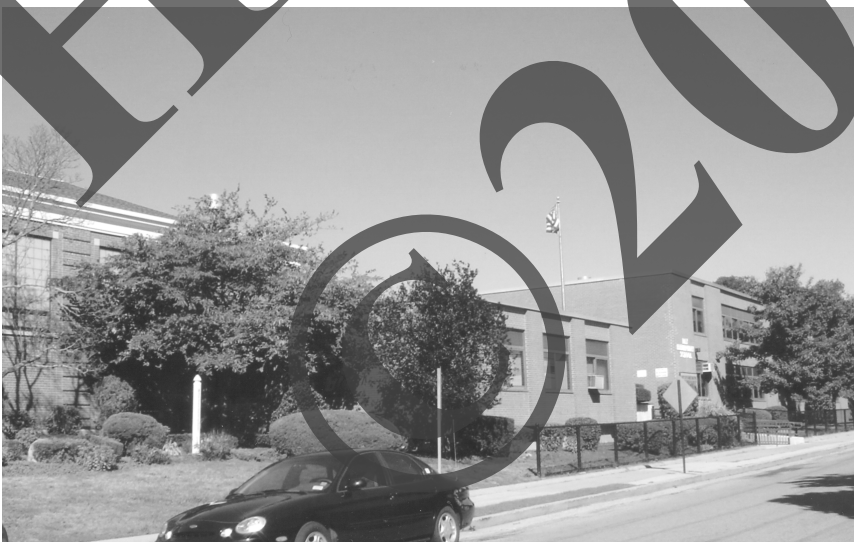
The Medford Avenue Elementary School opened January 5, 1931. There were no changes to the school by the time this picture was taken in 1992, but in 2005 the school was enlarged by an extension on the northeast corner of the building.



Construction on the new Bay Avenue School started in October, 1963. In this picture a bulldozer is digging out for the foundation of the new school building in front of the old school.



The foundation of the new school is rising. The building was completed by the beginning of the new school year, September, 1964. The old Bay Avenue School building was demolished in July, 1964.



The Bay Avenue School, 2005