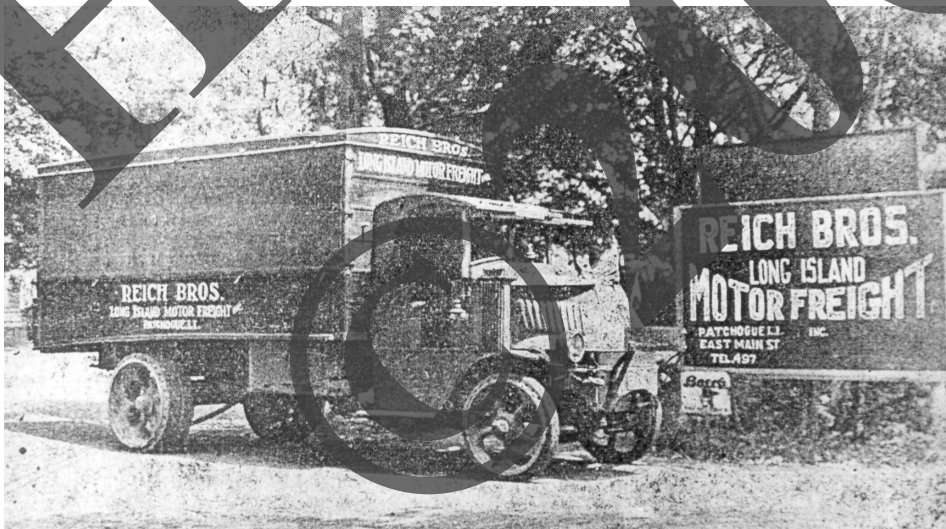




The Reich Brothers Trucking Company office building on the south side of East Main Street, between Evergreen and Grove Avenue, was built in 1928 and demolished in 1981, when the property was sold.

In 1919, George Reich Sr. and his sons August and Ralph started their trucking business with a 2-ton truck, hauling produce from the farms on the east end of the island to New York City. One brother would pick up farm produce in the daytime, and the other would drive the truck at night to New York. When the oldest brother, George Jr., returned from the Army, the firm began hauling seafood to Fulton Market. After George Sr. retired, the firm became the Reich Brothers Long Island Motor Freight. The business grew to become the largest trucking company on Long Island, with a warehouse in New York. In the 1970's the business gradually declined and finally closed down.



This is one of the early trucks of the trucking company in the early 1920's. It must have been a rough ride into New York on a truck with solid rubber tires. The large fleet of red and green painted trucks of the company in later years became a familiar sight on Long Island.

2-7-1926

Reich Bros.

Long Island Motor Freight

Local Office:
360 East Main St., Patchogue. Telephone 497

New York Office and Receiving Station:
11 Water St., N. Y. City Tel. Beekman 0187

We have solved the transportation problem for the Shav-Rite Safety Razor Corporation; also for merchants in every town on Long Island.

We Are Today the Largest Transportation Company on Long Island